

**Banner Elementary School**  
**Dunlap CUSD 323**  
**Dunlap, ILLINOIS**



**ILLINOIS**  
**SCHOOL**  
**REPORT**  
**CARD**

**GRADES : K 1 2 3 4 5**

State and federal laws require public school districts to release report cards to the public each year.

This year, we have updated the report card to provide a full picture of school performance beyond just test scores. A display of this data designed with parents and communities in mind is available on [illinoisreportcard.com](http://illinoisreportcard.com). All of the metrics posted on [illinoisreportcard.com](http://illinoisreportcard.com) are also included in this report.

## STUDENTS

| RACIAL/ETHNIC BACKGROUND AND OTHER INFORMATION |       |       |          |       |                                   |                 |                   |                    |                                    |             |                  |                  |
|--|-------|-------|----------|-------|-----------------------------------|-----------------|-------------------|--------------------|------------------------------------|-------------|------------------|------------------|
|  | White | Black | Hispanic | Asian | Native Hawaiian /Pacific Islander | American Indian | Two or More Races | Percent Low-Income | Percent Limited-English-Proficient | Percent IEP | Percent Homeless | Total Enrollment |
| <b>School</b>                                  | 70.2  | 2.6   | 3.1      | 17.8  | 0.5                               | 0.0             | 5.8               | 12.0               | 4.5                                | 16.5        | 0.0              | 382              |
| <b>District</b>                                | 69.7  | 5.9   | 2.4      | 17.1  | 0.1                               | 0.1             | 4.8               | 11.5               | 4.5                                | 12.1        | 0.2              | 4,227            |
| <b>State</b>                                   | 49.9  | 17.5  | 24.6     | 4.5   | 0.1                               | 0.3             | 3.1               | 51.5               | 9.5                                | 13.7        | 2.4              | 2,046,857        |

**Low-income** students come from families receiving public aid; live in institutions for neglected or delinquent children; are supported in foster homes with public funds; or are eligible to receive free or reduced-price lunches. IEP Students are those students eligible to receive special education services.

**Limited-English-proficient** students are those students eligible for transitional bilingual programs. **Total Enrollment** is based on Home School. **Homeless** students are who do not have permanent and adequate homes.

|                 | High Sch. Dropout Rate | Chronic Truancy Rate | Mobility Rate | Attendance Rate |
|-----------------|------------------------|----------------------|---------------|-----------------|
| <b>School</b>   |                        | 0.0                  | 8.9           | 96.0            |
| <b>District</b> |                        | 0.2                  | 7.7           | 95.5            |
| <b>State</b>    |                        | 8.7                  | 12.3          | 94.5            |

**Mobility rate** is based on the number of times students enroll in or leave a school during the school year.

**Chronic truants** are students who are absent from school without valid cause for 9 or more of the last 180 school days.

## INSTRUCTIONAL SETTING

| PARENTAL CONTACT* |         | Total School Days |      |
|-------------------|---------|-------------------|------|
|                   | Percent |                   | Days |
| <b>School</b>     | 100.0   | <b>School</b>     | 174  |
| <b>District</b>   | 100.0   | <b>District</b>   | 174  |
| <b>State</b>      | 95.7    | <b>State</b>      | 174  |

\* Parental contact includes parent-teacher conferences, parental visits to school, school visits to home, telephone conversations, and written correspondence.

| AVERAGE CLASS SIZE (as of the first school day in May) |      |      |      |      |      |      |   |   |   |        |         |
|--|------|------|------|------|------|------|---|---|---|--------|---------|
| Grades   | K    | 1    | 2    | 3    | 4    | 5    | 6 | 7 | 8 | 9 - 12 | Overall |
| <b>School</b>  | 21.3 | 24.0 | 20.7 | 33.0 | 21.0 | 23.0 |   |   |   |        | 23.3    |
| <b>District</b>  | 22.2 | 21.1 | 21.6 | 25.5 | 22.4 | 22.8 |   |   |   |        | 22.8    |
| <b>State</b>   | 21.2 | 21.6 | 21.8 | 22.5 | 22.8 | 23.2 |   |   |   |        | 21.4    |

| TIME DEVOTED TO TEACHING CORE SUBJECTS (Minutes Per Day) |             |   |   |         |   |   |                       |   |   |                |   |   |
|--|-------------|---|---|---------|---|---|-----------------------|---|---|----------------|---|---|
| Grades   | Mathematics |   |   | Science |   |   | English/Language Arts |   |   | Social Science |   |   |
|  | 3           | 6 | 8 | 3       | 6 | 8 | 3                     | 6 | 8 | 3              | 6 | 8 |
| School   | 60          |   |   | 30      |   |   | 156                   |   |   | 30             |   |   |
| District   | 66          |   |   | 26      |   |   | 147                   |   |   | 30             |   |   |
| State  | 62          |   |   | 30      |   |   | 141                   |   |   | 30             |   |   |

| TEACHER INFORMATION |  |
|---------------------|--|
|                     | % of Classes Not Taught by Highly Qualified Teachers |
| School              | 0.0  |
| District            | 0.0  |
| State               | 0.6  |

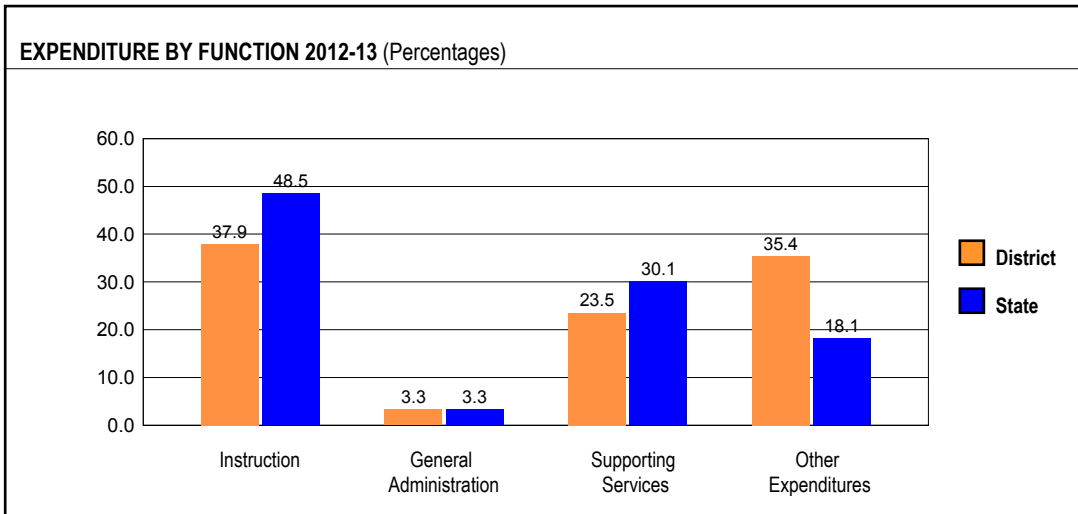
The No Child Left Behind Act requires that information for certain data elements be disaggregated by high- and low-poverty schools. Poverty (low-income) is defined on page 1 of all report cards. High- and low-poverty schools include those in the top and bottom quarters of the poverty distribution of schools in the state.

Some teacher/administrator data are not collected at the school level.

| TEACHER RETENTION RATE |      |
|------------------------|------|
| School                 | 71.0 |
| District               | 82.0 |
| State                  | 85.7 |

| PRINCIPAL TURNOVER (Count) |   |
|----------------------------|---|
| School                     | 1 |
| District                   | 2 |
| State                      | 2 |

## SCHOOL DISTRICT FINANCES



| REVENUE BY SOURCE 2012-13 |              |            |         | EXPENDITURE BY FUND 2012-13              |              |            |         |
|---------------------------|--------------|------------|---------|--|--------------|------------|---------|
|                           | District     | District % | State % |  | District     | District % | State % |
| Local Property Taxes      | \$34,155,577 | 82.7       | 61.3    | Education                                | \$27,226,324 | 53.7       | 73.6    |
| Other Local Funding       | \$2,185,745  | 5.3        | 4.7     | Operations & Maintenance                 | \$4,344,897  | 8.6        | 6.2     |
| General State Aid         | \$1,402,515  | 3.4        | 16.1    | Transportation                           | \$2,496,291  | 4.9        | 3.8     |
| Other State Funding       | \$2,114,947  | 5.1        | 10.0    | Debt Service                             | \$4,835,282  | 9.5        | 7.8     |
| Federal Funding           | \$1,421,792  | 3.4        | 7.9     | Tort                                     | \$401,055    | 0.8        | 1.2     |
| TOTAL                     | \$41,280,576 |            |         | Municipal Retirement/<br>Social Security | \$1,218,369  | 2.4        | 2.1     |
|                           |              |            |         | Fire Prevention & Safety                 | \$2,246      | 0.0        | 0.6     |
|                           |              |            |         | Capital Projects                         | \$10,141,422 | 20.0       | 4.7     |
|                           |              |            |         | TOTAL                                    | \$50,665,886 |            |         |

| OTHER FINANCIAL INDICATORS |   |                                      |   |   |
|----------------------------|---|--------------------------------------|---|---|
|                            | 2011 Equalized Assessed Valuation per Pupil | 2011 Total School Tax Rate per \$100 | 2012-13 Instructional Expenditure per Pupil | 2012-13 Operating Expenditure per Pupil |
| District                   | \$208,166                                   | 4.17                                 | \$5,047                                     | \$9,112                                 |
| State                      | **  | **                                   | \$7,094                                     | \$12,045                                |

\*\* Due to the way Illinois school districts are configured, state averages for equalized assessed valuation per pupil and total school tax rate per \$100 are not provided.

**Equalized assessed valuation** includes all computed property values upon which a district's local tax rate is calculated.

**Total school tax rate** is a district's total tax rate as it appears on local property tax bills.

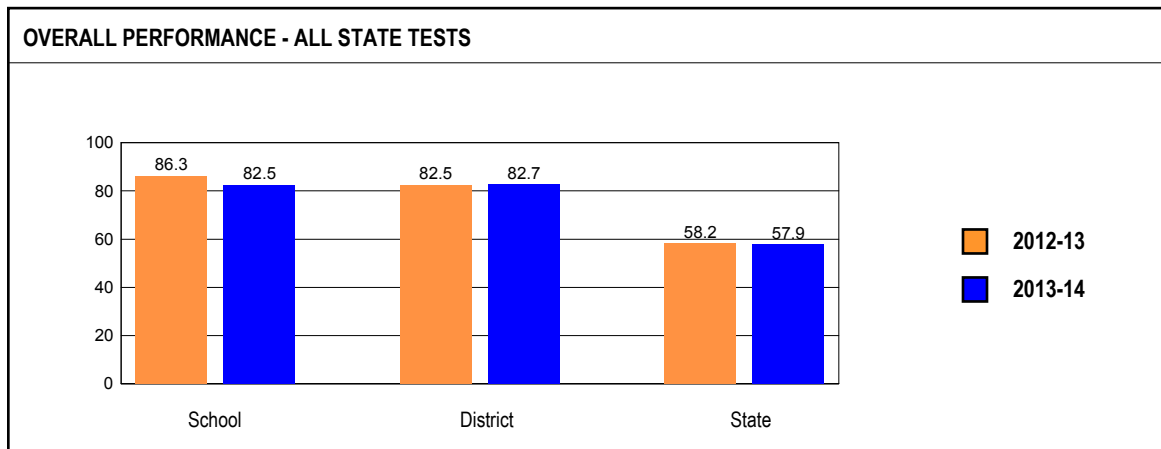
**Instructional expenditure per pupil** includes the direct costs of teaching pupils or the interaction between teachers and pupils.

**Operating expenditure per pupil** includes the gross operating cost of a school district excluding summer school, adult education, bond principal retired, and capital expenditures.

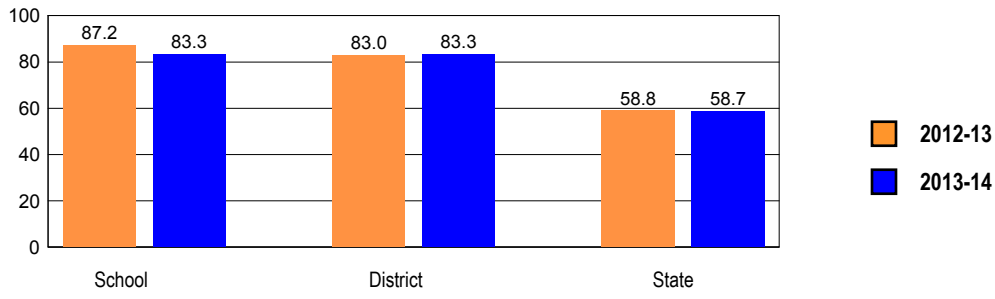
## ACADEMIC PERFORMANCE

### OVERALL STUDENT PERFORMANCE

These charts present the overall percentages of state test scores categorized as meeting or exceeding the Illinois Learning Standards for your school, district, and the state. They represent your school's performance in reading and mathematics. The ISAT reading and math cut scores were reset for school year 2013. Starting in 2013, Illinois raised the performance cut scores in reading and math to align with college and career ready expectations. In order to align the Illinois Alternative Assessment (IAA) with the content standards of the Common Core Essentials Elements, Illinois raised the performance cut scores of IAA in reading and math in 2014.

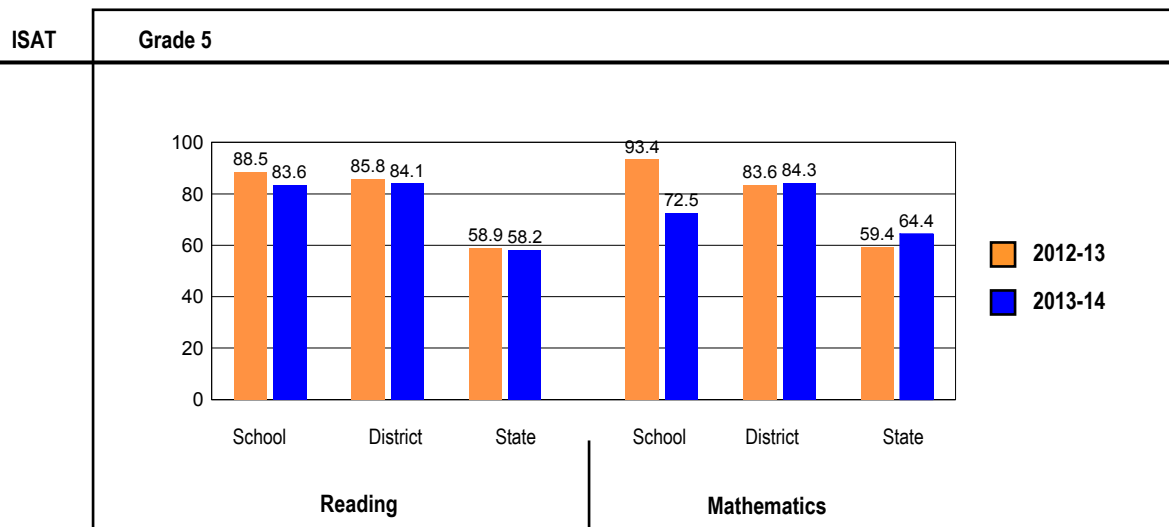
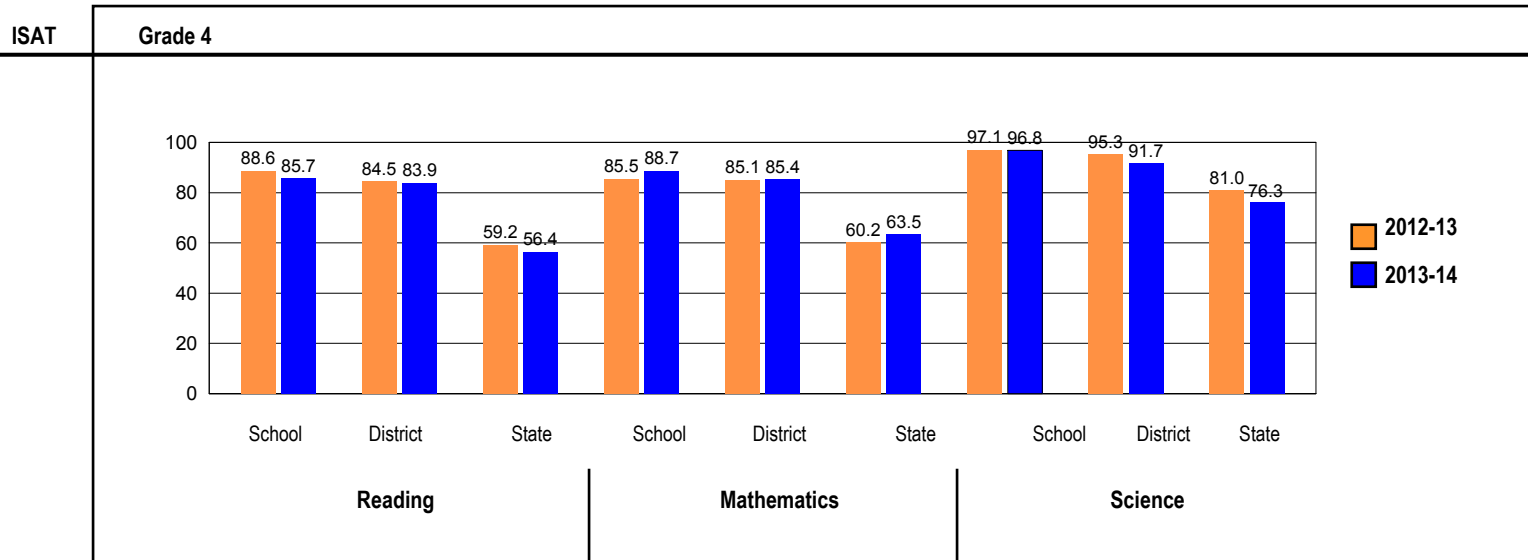
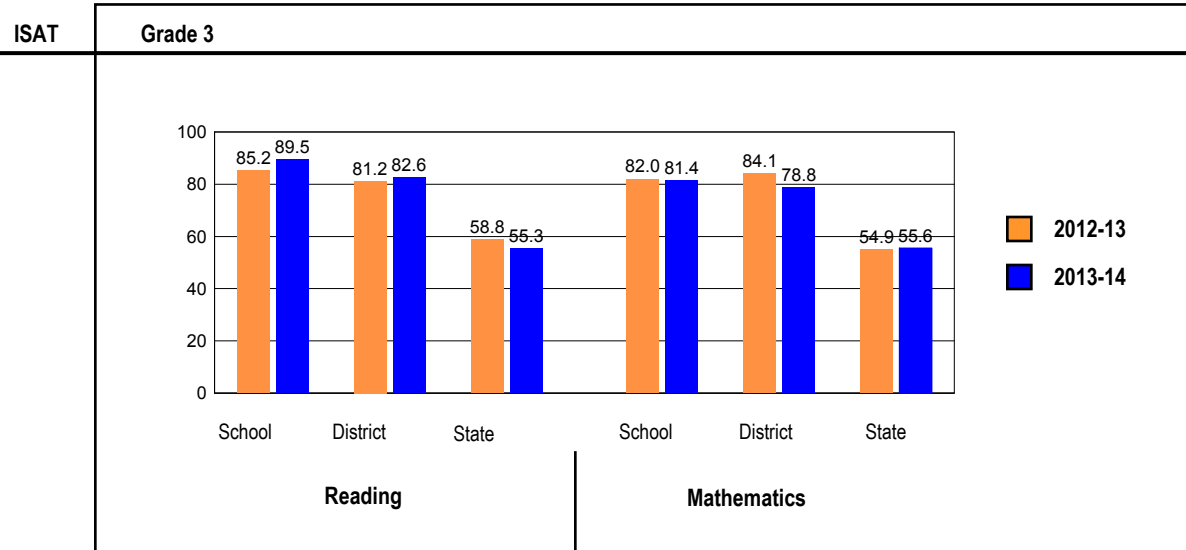


**OVERALL ILLINOIS STANDARDS ACHIEVEMENT TEST (ISAT) PERFORMANCE**



**ISAT PERFORMANCE**

These charts provide information on attainment of the Illinois Learning Standards. They show the percents of student scores meeting or exceeding Standards for the grades and subjects tested on ISAT.



## PERFORMANCE ON STATE ASSESSMENTS

Federal law requires that student achievement results for reading, mathematics, and science for schools providing Title I services be reported to the general public.

The Illinois Standards Achievement Test (ISAT) is administered to students in grades 3 through 8. The Prairie State Achievement Examination (PSAE) is administered to students in grade 11. The Illinois Alternate Assessment (IAA) is administered to students with disabilities whose Individualized Education Programs (IEPs) indicate that participation in the ISAT or PSAE would not be appropriate.

Students with disabilities have an IEP (No Child Left Behind Act). An IEP is a written plan for a child with a disability who is eligible to receive special education services under the Individuals with Disabilities Education Act.

Reading and Mathematics are tested in grades 3 through 8 and 11. Science is tested in grades 4, 7, and 11.

In order to protect students' identities, test data for groups of fewer than ten students are not reported.

| PERCENTAGE OF STUDENTS NOT TESTED IN STATE TESTING PROGRAMS FOR READING |             |           |         |         |                          |         |          |        |                                   |                 |                   |        |         |                            |                            |
|---|-------------|-----------|---------|---------|--------------------------|---------|----------|--------|-----------------------------------|-----------------|-------------------|--------|---------|----------------------------|----------------------------|
|   |             | Gender    |         |         | Racial/Ethnic Background |         |          |        |                                   |                 |                   | LEP    | Migrant | Students with Disabilities | Economically Disadvantaged |
|   |             | All       | Male    | Female  | White                    | Black   | Hispanic | Asian  | Native Hawaiian /Pacific islander | American Indian | Two or More Races |        |         |                            |                            |
| School  | *Enrollment | 192       | 96      | 96      | 135                      | 8       | 6        | 28     | 1                                 | 0               | 14                | 6      | 0       | 20                         | 21                         |
|   | Reading     | 1.0       | 0.0     | 2.1     | 0.7                      |         |          | 3.6    |                                   |                 | 0.0               |        |         | 5.0                        | 0.0                        |
| District  | *Enrollment | 2,183     | 1,119   | 1,064   | 1,551                    | 120     | 54       | 350    | 1                                 | 1               | 106               | 57     | 0       | 221                        | 247                        |
|   | Reading     | 0.6       | 0.5     | 0.7     | 0.3                      | 0.0     | 5.6      | 0.9    |                                   |                 | 1.9               | 10.5   |         | 0.9                        | 0.8                        |
| State   | *Enrollment | 1,060,658 | 543,109 | 517,316 | 532,220                  | 183,481 | 260,114  | 48,330 | 1,029                             | 2,982           | 31,812            | 70,904 | 280     | 143,042                    | 547,657                    |
|   | Reading     | 0.6       | 0.6     | 0.5     | 0.4                      | 0.8     | 0.6      | 0.5    | 1.2                               | 0.8             | 0.6               | 1.1    | 2.5     | 1.2                        | 0.7                        |

\* Enrollment as reported during the testing windows for grades 3 - 8 and 11.

Number of LEP Students who have attended schools in the U.S. for less than 12 months and are not assessed on the State's reading/language arts test: 4

| PERCENTAGE OF STUDENTS NOT TESTED IN STATE TESTING PROGRAMS FOR MATHEMATICS |             |           |         |         |                          |         |          |        |                                  |                 |                   |        |         |                            |                            |
|---|-------------|-----------|---------|---------|--------------------------|---------|----------|--------|----------------------------------|-----------------|-------------------|--------|---------|----------------------------|----------------------------|
|   |             | Gender    |         |         | Racial/Ethnic Background |         |          |        |                                  |                 |                   | LEP    | Migrant | Students with Disabilities | Economically Disadvantaged |
|   |             | All       | Male    | Female  | White                    | Black   | Hispanic | Asian  | Native Hawaiian/Pacific Islander | American Indian | Two or More Races |        |         |                            |                            |
| School  | *Enrollment | 196       | 98      | 98      | 136                      | 9       | 6        | 30     | 1                                | 0               | 14                | 10     | 0       | 20                         | 21                         |
|   | Mathematics | 1.0       | 0.0     | 2.0     | 0.7                      |         |          | 3.3    |                                  |                 | 0.0               | 0.0    |         | 5.0                        | 0.0                        |
| District  | *Enrollment | 2,192     | 1,124   | 1,068   | 1,552                    | 122     | 55       | 355    | 1                                | 1               | 106               | 68     | 0       | 221                        | 247                        |
|   | Mathematics | 0.5       | 0.8     | 0.3     | 0.5                      | 0.8     | 0.0      | 0.3    |                                  |                 | 1.9               | 0.0    |         | 2.3                        | 1.2                        |
| State   | *Enrollment | 1,062,316 | 543,976 | 518,107 | 532,697                  | 183,560 | 260,674  | 48,844 | 1,035                            | 2,994           | 31,822            | 72,621 | 281     | 143,066                    | 548,658                    |
|   | Mathematics | 0.5       | 0.6     | 0.5     | 0.4                      | 0.9     | 0.5      | 0.3    | 0.4                              | 0.6             | 0.6               | 0.6    | 1.4     | 1.2                        | 0.6                        |

\* Enrollment as reported during the testing windows for grades 3 - 8 and 11.

| PERCENTAGE OF STUDENTS NOT TESTED IN STATE TESTING PROGRAMS FOR SCIENCE |             |         |         |         |                          |        |          |        |                                  |                 |                   |        |         |                            |                            |
|---|-------------|---------|---------|---------|--------------------------|--------|----------|--------|----------------------------------|-----------------|-------------------|--------|---------|----------------------------|----------------------------|
|   |             | Gender  |         |         | Racial/Ethnic Background |        |          |        |                                  |                 |                   | LEP    | Migrant | Students with Disabilities | Economically Disadvantaged |
|   |             | All     | Male    | Female  | White                    | Black  | Hispanic | Asian  | Native Hawaiian/Pacific Islander | American Indian | Two or More Races |        |         |                            |                            |
| School  | *Enrollment | 67      | 30      | 37      | 38                       | 5      | 4        | 12     | 1                                | 0               | 7                 | 1      | 0       | 7                          | 9                          |
|   | Science     | 3.0     | 0.0     | 5.4     | 2.6                      |        |          | 8.3    |                                  |                 |                   |        |         |                            |                            |
| District  | *Enrollment | 952     | 502     | 450     | 664                      | 59     | 20       | 158    | 1                                | 0               | 50                | 21     | 0       | 93                         | 105                        |
|   | Science     | 0.9     | 1.0     | 0.9     | 0.8                      | 0.0    | 5.0      | 1.3    |                                  |                 | 2.0               | 0.0    |         | 3.2                        | 1.0                        |
| State   | *Enrollment | 454,072 | 231,511 | 222,497 | 231,754                  | 77,973 | 108,437  | 20,846 | 425                              | 1,245           | 13,169            | 23,463 | 112     | 60,394                     | 226,590                    |
|   | Science     | 0.7     | 0.8     | 0.6     | 0.5                      | 1.3    | 0.7      | 0.3    | 0.2                              | 1.1             | 0.8               | 0.9    | 0.9     | 1.4                        | 0.9                        |

\* Enrollment as reported during the testing windows for grades 4, 7, and 11.

### ILLINOIS STANDARDS ACHIEVEMENT TEST (ISAT)

The following tables show the percentages of student scores in each of four performance levels. These levels were established with the help of Illinois educators who teach the grade levels and learning areas tested. Due to rounding, the sum of the percentages in the four performance levels may not always equal 100.

- Level 1 -- Academic Warning - Student work demonstrates limited knowledge and skills in the subject. Because of major gaps in learning, students apply knowledge and skills ineffectively.
- Level 2 -- Below Standards - Student work demonstrates basic knowledge and skills in the subject. However, because of gaps in learning, students apply knowledge and skills in limited ways.
- Level 3 -- Meets Standards - Student work demonstrates proficient knowledge and skills in the subject. Students effectively apply knowledge and skills to solve problems.
- Level 4 -- Exceeds Standards - Student work demonstrates advanced knowledge and skills in the subject. Students creatively apply knowledge and skills to solve problems and evaluate the results.

**Grade 3****Grade 3 - All**

| Levels   | Reading |      |      |      | Mathematics |      |      |      |
|----------|---------|------|------|------|-------------|------|------|------|
|          | 1       | 2    | 3    | 4    | 1           | 2    | 3    | 4    |
| School   | 0.0     | 10.5 | 52.6 | 36.8 | 0.0         | 18.6 | 67.8 | 13.6 |
| District | 1.3     | 16.1 | 42.0 | 40.7 | 2.5         | 18.8 | 49.1 | 29.7 |
| State    | 7.4     | 37.2 | 35.9 | 19.4 | 7.3         | 37.1 | 42.4 | 13.2 |

**Grade 3 - Gender**

| Levels | Reading  |     |      |      | Mathematics |     |      |      |      |
|--------|----------|-----|------|------|-------------|-----|------|------|------|
|        | 1        | 2   | 3    | 4    | 1           | 2   | 3    | 4    |      |
| Male   | School   | 0.0 | 11.8 | 52.9 | 35.3        | 0.0 | 11.8 | 73.5 | 14.7 |
|        | District | 2.3 | 17.5 | 39.8 | 40.4        | 3.5 | 15.2 | 50.3 | 31.0 |
|        | State    | 8.6 | 38.9 | 35.2 | 17.2        | 8.1 | 36.9 | 41.2 | 13.8 |
| Female | School   | 0.0 | 8.7  | 52.2 | 39.1        | 0.0 | 28.0 | 60.0 | 12.0 |
|        | District | 0.0 | 14.4 | 44.5 | 41.1        | 1.3 | 22.8 | 47.7 | 28.2 |
|        | State    | 6.2 | 35.5 | 36.6 | 21.8        | 6.5 | 37.2 | 43.6 | 12.6 |

**Grade 3 - Racial/Ethnic Background**

| Levels                           | Reading  |      |      |      | Mathematics |      |      |      |      |
|----------------------------------|----------|------|------|------|-------------|------|------|------|------|
|                                  | 1        | 2    | 3    | 4    | 1           | 2    | 3    | 4    |      |
| White                            | School   | 0.0  | 14.3 | 52.4 | 33.3        | 0.0  | 21.4 | 69.0 | 9.5  |
|                                  | District | 1.4  | 15.6 | 43.1 | 39.9        | 1.8  | 18.9 | 53.0 | 26.3 |
|                                  | State    | 3.4  | 28.0 | 41.6 | 26.9        | 3.8  | 29.7 | 49.4 | 17.1 |
| Black                            | School   |      |      |      |             |      |      |      |      |
|                                  | District | 8.3  | 25.0 | 58.3 | 8.3         | 25.0 | 25.0 | 50.0 | 0.0  |
|                                  | State    | 14.0 | 50.3 | 27.6 | 8.0         | 15.3 | 49.7 | 29.9 | 5.2  |
| Hispanic                         | School   |      |      |      |             |      |      |      |      |
|                                  | District |      |      |      |             |      |      |      |      |
|                                  | State    | 11.5 | 49.4 | 30.3 | 8.7         | 9.7  | 46.7 | 37.6 | 6.0  |
| Asian                            | School   | 0.0  | 0.0  | 40.0 | 60.0        | 0.0  | 0.0  | 66.7 | 33.3 |
|                                  | District | 0.0  | 8.5  | 33.9 | 57.6        | 0.0  | 9.5  | 36.5 | 54.0 |
|                                  | State    | 2.3  | 17.5 | 38.3 | 41.9        | 1.6  | 14.3 | 43.6 | 40.5 |
| Native Hawaiian/Pacific Islander | School   |      |      |      |             |      |      |      |      |
|                                  | District |      |      |      |             |      |      |      |      |
|                                  | State    | 2.6  | 31.1 | 42.4 | 23.8        | 3.2  | 33.3 | 46.8 | 16.7 |
| American Indian                  | School   |      |      |      |             |      |      |      |      |
|                                  | District |      |      |      |             |      |      |      |      |
|                                  | State    | 9.7  | 42.7 | 36.3 | 11.3        | 8.3  | 44.2 | 40.7 | 6.9  |
| Two or More Races                | School   |      |      |      |             |      |      |      |      |
|                                  | District | 0.0  | 35.0 | 35.0 | 30.0        | 0.0  | 40.0 | 40.0 | 20.0 |
|                                  | State    | 5.4  | 34.0 | 37.0 | 23.6        | 6.7  | 35.7 | 42.0 | 15.6 |

**Grade 4****Grade 4 - All**

| Levels   | Reading |      |      |      | Mathematics |      |      |      | Science |      |      |      |
|----------|---------|------|------|------|-------------|------|------|------|---------|------|------|------|
|          | 1       | 2    | 3    | 4    | 1           | 2    | 3    | 4    | 1       | 2    | 3    | 4    |
| School   | 1.6     | 12.7 | 41.3 | 44.4 | 0.0         | 11.3 | 66.1 | 22.6 | 0.0     | 3.2  | 55.6 | 41.3 |
| District | 0.9     | 15.2 | 48.1 | 35.8 | 1.6         | 13.0 | 64.4 | 21.0 | 0.6     | 7.6  | 53.3 | 38.4 |
| State    | 5.1     | 38.6 | 39.5 | 16.8 | 6.6         | 29.9 | 51.8 | 11.7 | 3.3     | 20.4 | 59.9 | 16.3 |



**Grade 4 - Gender**

| Levels | Reading  |     |      |      | Mathematics |     |      |      | Science |     |      |      |      |
|--------|----------|-----|------|------|-------------|-----|------|------|---------|-----|------|------|------|
|        | 1        | 2   | 3    | 4    | 1           | 2   | 3    | 4    | 1       | 2   | 3    | 4    |      |
| Male   | School   | 0.0 | 17.2 | 27.6 | 55.2        | 0.0 | 10.3 | 58.6 | 31.0    | 0.0 | 0.0  | 58.6 | 41.4 |
|        | District | 1.2 | 16.6 | 46.2 | 36.1        | 2.4 | 12.4 | 61.5 | 23.7    | 0.6 | 7.1  | 52.1 | 40.2 |
|        | State    | 6.4 | 40.7 | 38.2 | 14.8        | 7.3 | 29.3 | 50.0 | 13.3    | 3.7 | 21.0 | 58.2 | 17.1 |
| Female | School   | 2.9 | 8.8  | 52.9 | 35.3        | 0.0 | 12.1 | 72.7 | 15.2    | 0.0 | 5.9  | 52.9 | 41.2 |
|        | District | 0.7 | 13.6 | 50.3 | 35.4        | 0.7 | 13.7 | 67.8 | 17.8    | 0.7 | 8.2  | 54.8 | 36.3 |
|        | State    | 3.7 | 36.4 | 40.9 | 19.0        | 5.8 | 30.5 | 53.7 | 10.0    | 2.8 | 19.9 | 61.7 | 15.6 |

**Grade 4 - Racial/Ethnic Background**

| Levels                           | Reading  |     |      |      | Mathematics |      |      |      | Science |     |      |      |      |
|----------------------------------|----------|-----|------|------|-------------|------|------|------|---------|-----|------|------|------|
|                                  | 1        | 2   | 3    | 4    | 1           | 2    | 3    | 4    | 1       | 2   | 3    | 4    |      |
| White                            | School   | 2.8 | 22.2 | 33.3 | 41.7        | 0.0  | 17.1 | 68.6 | 14.3    | 0.0 | 5.6  | 66.7 | 27.8 |
|                                  | District | 0.5 | 14.9 | 52.5 | 32.2        | 0.5  | 15.4 | 67.7 | 16.4    | 0.0 | 7.4  | 57.9 | 34.7 |
|                                  | State    | 2.5 | 29.2 | 45.4 | 23.0        | 3.7  | 22.1 | 58.4 | 15.7    | 1.5 | 12.1 | 63.6 | 22.9 |
| Black                            | School   | 5.0 | 35.0 | 45.0 | 15.0        | 5.3  | 26.3 | 63.2 | 5.3     | 5.0 | 15.0 | 60.0 | 20.0 |
|                                  | District | 9.9 | 54.6 | 29.3 | 6.2         | 13.5 | 44.6 | 39.0 | 2.8     | 7.4 | 36.4 | 51.3 | 5.0  |
|                                  | State    |     |      |      |             |      |      |      |         |     |      |      |      |
| Hispanic                         | School   |     |      |      |             | 0.0  | 0.0  | 90.0 | 10.0    |     |      |      |      |
|                                  | District |     |      |      |             | 8.4  | 39.1 | 47.7 | 4.8     | 4.5 | 28.7 | 59.4 | 7.4  |
|                                  | State    | 7.7 | 50.2 | 33.9 | 8.2         | 8.4  | 39.1 | 47.7 | 4.8     | 4.5 | 28.7 | 59.4 | 7.4  |
| Asian                            | School   | 0.0 | 0.0  | 36.4 | 63.6        | 0.0  | 0.0  | 45.5 | 54.5    | 0.0 | 0.0  | 36.4 | 63.6 |
|                                  | District | 1.6 | 9.7  | 30.6 | 58.1        | 1.6  | 0.0  | 53.2 | 45.2    | 1.6 | 1.6  | 39.3 | 57.4 |
|                                  | State    | 1.8 | 18.4 | 45.0 | 34.8        | 2.0  | 10.7 | 51.4 | 35.9    | 1.3 | 8.0  | 56.3 | 34.4 |
| Native Hawaiian/Pacific Islander | School   |     |      |      |             |      |      |      |         |     |      |      |      |
|                                  | District |     |      |      |             |      |      |      |         |     |      |      |      |
|                                  | State    | 1.7 | 28.6 | 41.2 | 28.6        | 1.6  | 23.0 | 55.7 | 19.7    | 0.8 | 13.8 | 55.3 | 30.1 |
| American Indian                  | School   |     |      |      |             |      |      |      |         |     |      |      |      |
|                                  | District |     |      |      |             |      |      |      |         |     |      |      |      |
|                                  | State    | 6.6 | 42.5 | 36.9 | 14.0        | 5.8  | 35.0 | 51.5 | 7.6     | 3.3 | 22.8 | 59.2 | 14.7 |
| Two or More Races                | School   |     |      |      |             |      |      |      |         |     |      |      |      |
|                                  | District | 0.0 | 18.2 | 59.1 | 22.7        | 9.1  | 22.7 | 54.5 | 13.6    | 0.0 | 22.7 | 40.9 | 36.4 |
|                                  | State    | 3.8 | 34.4 | 41.7 | 20.2        | 6.3  | 27.7 | 50.5 | 15.5    | 2.7 | 18.1 | 59.6 | 19.7 |

**Grade 5****Grade 5 - All**

| Levels   | Reading |      |      |      | Mathematics |      |      |      |
|----------|---------|------|------|------|-------------|------|------|------|
|          | 1       | 2    | 3    | 4    | 1           | 2    | 3    | 4    |
| School   | 1.5     | 14.9 | 46.3 | 37.3 | 7.2         | 20.3 | 56.5 | 15.9 |
| District | 1.9     | 14.1 | 47.5 | 36.6 | 2.8         | 12.9 | 55.5 | 28.8 |
| State    | 8.0     | 33.8 | 43.9 | 14.3 | 5.6         | 30.0 | 49.0 | 15.4 |

**Grade 5 - Gender**

| Levels | Reading  |     |      |      | Mathematics |      |      |      |      |
|--------|----------|-----|------|------|-------------|------|------|------|------|
|        | 1        | 2   | 3    | 4    | 1           | 2    | 3    | 4    |      |
| Male   | School   | 3.2 | 22.6 | 41.9 | 32.3        | 12.1 | 24.2 | 48.5 | 15.2 |
|        | District | 3.6 | 17.9 | 44.6 | 33.9        | 4.2  | 14.4 | 50.9 | 30.5 |
|        | State    | 9.8 | 35.7 | 42.2 | 12.3        | 6.3  | 30.7 | 46.8 | 16.2 |
| Female | School   | 0.0 | 8.3  | 50.0 | 41.7        | 2.8  | 16.7 | 63.9 | 16.7 |
|        | District | 0.0 | 9.9  | 50.7 | 39.5        | 1.3  | 11.2 | 60.5 | 27.0 |
|        | State    | 6.1 | 31.9 | 45.6 | 16.4        | 4.8  | 29.4 | 51.2 | 14.6 |

**Grade 5 - Racial/Ethnic Background**

| Levels                           | Reading  |      |      |      | Mathematics |      |      |      |      |
|----------------------------------|----------|------|------|------|-------------|------|------|------|------|
|                                  | 1        | 2    | 3    | 4    | 1           | 2    | 3    | 4    |      |
| White                            | School   | 0.0  | 14.8 | 48.1 | 37.0        | 3.6  | 23.6 | 60.0 | 12.7 |
|                                  | District | 1.3  | 13.8 | 52.0 | 32.9        | 1.8  | 13.0 | 61.9 | 23.3 |
|                                  | State    | 4.5  | 25.3 | 50.8 | 19.4        | 3.5  | 23.5 | 53.0 | 20.0 |
| Black                            | School   |      |      |      |             |      |      |      |      |
|                                  | District | 15.0 | 35.0 | 45.0 | 5.0         | 25.0 | 45.0 | 30.0 | 0.0  |
|                                  | State    | 15.4 | 48.3 | 31.6 | 4.8         | 10.6 | 43.7 | 40.8 | 4.8  |
| Hispanic                         | School   |      |      |      |             |      |      |      |      |
|                                  | District |      |      |      |             |      |      |      |      |
|                                  | State    | 11.1 | 44.5 | 37.9 | 6.4         | 7.0  | 37.4 | 48.0 | 7.6  |
| Asian                            | School   |      |      |      |             |      |      |      |      |
|                                  | District | 0.0  | 5.5  | 34.5 | 60.0        | 0.0  | 3.6  | 39.3 | 57.1 |
|                                  | State    | 2.4  | 16.0 | 46.1 | 35.4        | 1.6  | 10.3 | 42.4 | 45.7 |
| Native Hawaiian/Pacific Islander | School   |      |      |      |             |      |      |      |      |
|                                  | District |      |      |      |             |      |      |      |      |
|                                  | State    | 3.4  | 29.5 | 48.3 | 18.8        | 3.3  | 24.3 | 52.0 | 20.4 |
| American Indian                  | School   |      |      |      |             |      |      |      |      |
|                                  | District |      |      |      |             |      |      |      |      |
|                                  | State    | 6.2  | 39.1 | 41.2 | 13.5        | 6.4  | 35.5 | 45.2 | 12.9 |
| Two or More Races                | School   |      |      |      |             |      |      |      |      |
|                                  | District | 0.0  | 25.0 | 25.0 | 50.0        | 0.0  | 8.3  | 41.7 | 50.0 |
|                                  | State    | 7.6  | 30.7 | 44.4 | 17.3        | 5.7  | 28.9 | 47.7 | 17.7 |

## 2014 STUDENT ACADEMIC GROWTH

| Average Growth Value |         |       |
|----------------------|---------|-------|
|                      | Reading | Math  |
| School               | 111.0   | 104.8 |
| District             | 107.2   | 111.0 |
| State                | 99.4    | 102.9 |

Illinois has chosen to use a value table methodology to determine the school and district growth metric based on student performance on large-scale assessments (the ISAT). The numbers contained in the value table represent the number of students in each cell. The average of all students' academic growth over two year's performance will be used to determine the growth metric..

### Reading

|                             |                   |    | Performance Level in Year 2 |    |                 |    |                 |    |                   |    |  |  |
|-----------------------------|-------------------|----|-----------------------------|----|-----------------|----|-----------------|----|-------------------|----|--|--|
|                             |                   |    | Academic Warning            |    | Below Standards |    | Meets Standards |    | Exceeds Standards |    |  |  |
|                             |                   |    | 1A                          | 1B | 2A              | 2B | 3A              | 3B | 4A                | 4B |  |  |
| Performance Level in Year 1 | Academic Warning  | 1A |                             |    |                 |    |                 |    |                   |    |  |  |
|                             |                   | 1B |                             | 1  | 1               |    |                 |    |                   |    |  |  |
|                             | Below Standards   | 2A |                             |    |                 | 2  |                 |    |                   |    |  |  |
|                             |                   | 2B |                             |    | 2               | 7  | 3               |    |                   |    |  |  |
|                             | Meets Standards   | 3A |                             |    |                 | 4  | 6               | 11 | 1                 | 1  |  |  |
|                             |                   | 3B |                             |    |                 | 1  | 9               | 15 | 13                | 1  |  |  |
|                             | Exceeds Standards | 4A |                             |    |                 |    | 3               | 8  | 8                 | 8  |  |  |
|                             |                   | 4B |                             |    |                 |    | 1               |    | 6                 | 14 |  |  |

### Math

|                             |                   |    | Performance Level in Year 2 |    |                 |    |                 |    |                   |    |  |  |
|-----------------------------|-------------------|----|-----------------------------|----|-----------------|----|-----------------|----|-------------------|----|--|--|
|                             |                   |    | Academic Warning            |    | Below Standards |    | Meets Standards |    | Exceeds Standards |    |  |  |
|                             |                   |    | 1A                          | 1B | 2A              | 2B | 3A              | 3B | 4A                | 4B |  |  |
| Performance Level in Year 1 | Academic Warning  | 1A |                             |    |                 |    |                 |    |                   |    |  |  |
|                             |                   | 1B |                             | 2  |                 |    |                 |    |                   |    |  |  |
|                             | Below Standards   | 2A |                             | 1  |                 | 1  | 1               |    |                   |    |  |  |
|                             |                   | 2B |                             |    | 2               | 3  | 8               | 1  |                   |    |  |  |
|                             | Meets Standards   | 3A |                             |    | 1               | 11 | 18              | 9  |                   |    |  |  |
|                             |                   | 3B |                             |    |                 |    | 16              | 20 | 9                 |    |  |  |
|                             | Exceeds Standards | 4A |                             |    |                 |    |                 | 5  | 6                 | 3  |  |  |
|                             |                   | 4B |                             |    |                 |    |                 | 1  | 2                 | 4  |  |  |